

# Omron robotic solutions

Complete automation expertise



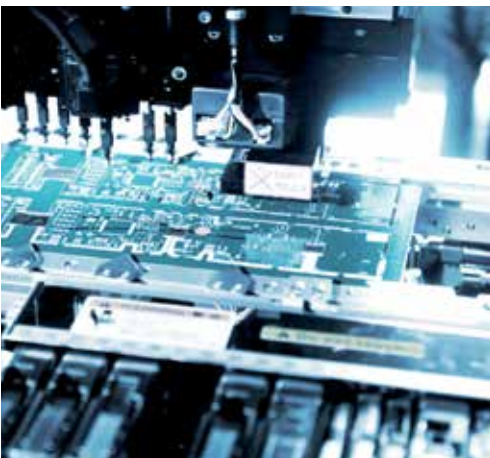
# Integrated robotics solution



## Flexible manufacturing enabled by a seamless integration of robots and machine control

Omron's unique combination of software and control architecture addresses factory automation challenges, from producing a high volume high variety mix of products to short product lifecycles that require rapid production line changes.

Fully integrated control, software architecture and development environment meet current and future needs for process design, flexible operation and predictable maintenance. The flexibility and agility of our solutions is ideal for industries such as Food and Beverage, Automotive and Electronics.



- ✓ **Rapid changeover** with easy to use software that automatically generates code.
- ✓ **Application specific solutions** for **packaging** and **assembly** operations.

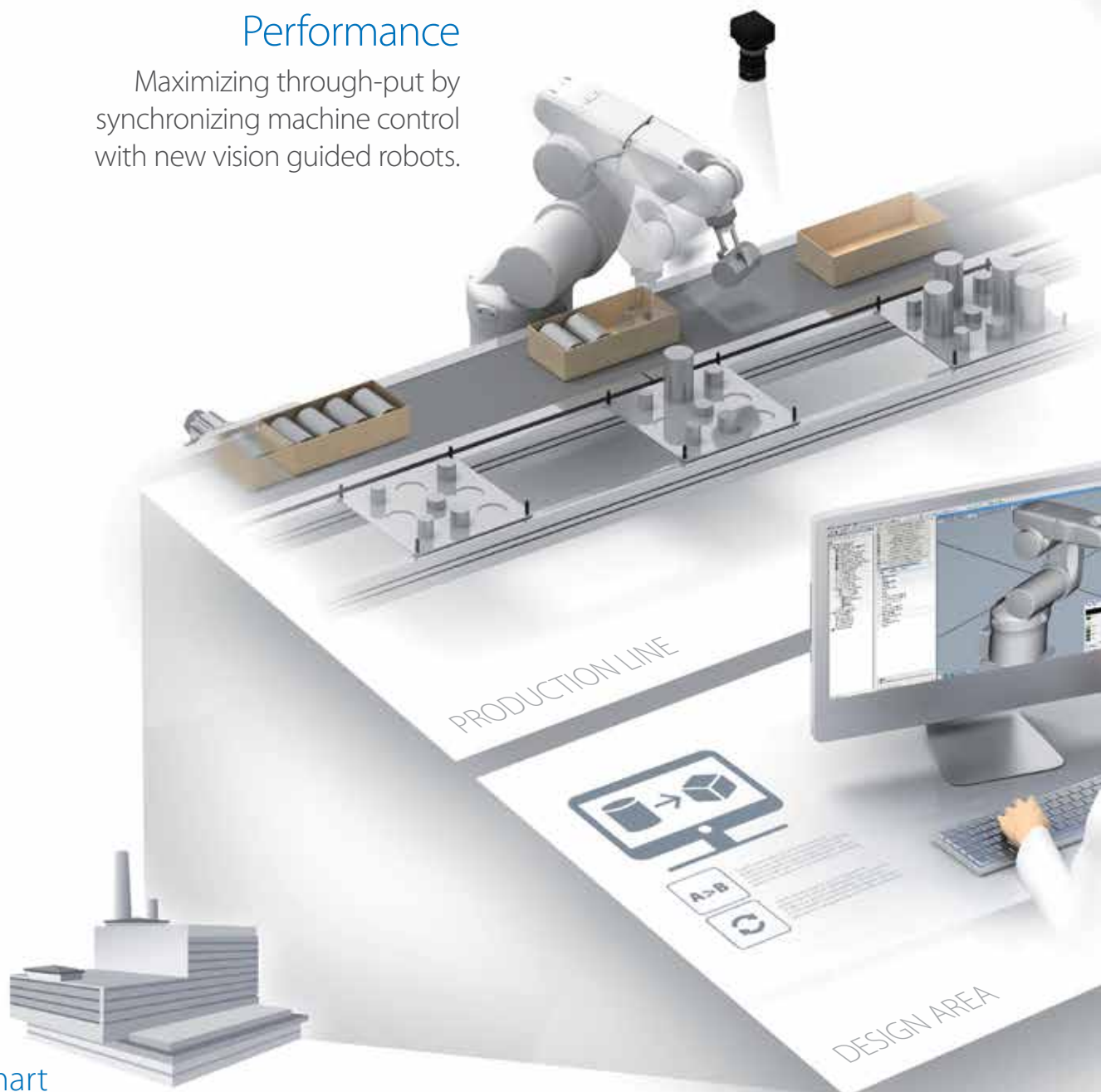
omron | adept

Complete automation expertise  
80+ years of manufacturing automation solutions

# Robotic solutions for your most demanding applications

## Performance

Maximizing through-put by synchronizing machine control with new vision guided robots.



Smart  
factory

## Quick delivery

5 automated warehouses to provide parts quickly.

## Simple

Shorten startup and maintenance time with our integrated software environment.

## Efficient

Optimize productivity and efficiency by utilizing data collected from robots, controllers and sensors.

## Flexible

Automatically generate new application specific programming code with our advanced ACE software.





# The complete solution for factory automation and machine control

## Over 200,000 products available



### Control

- Machine controller, HMI and I/O
- Direct database connection for IIoT applications



### Robots

- Parallel, SCARA and articulated robots
- Easy to use software to automatically generate code
- ePLC program the robot using common PLC language



### Vision and measurement

- Quality control and inspection
- Product position and orientation detection for pick and place applications



## Motion

- Rotary and linear servo motors
- Frequency inverters



## Safety

- Complete safety lineup
- Light curtains, laser scanners, e-stop, door switches, safety mats and programmable safety controllers



## Sensing

- Photoelectric, inductive, rotary encoder, mark and color, fiber optic and mechanical sensors



OMRON | adept

Feasibility studies  
by leading experts in automation



# Global collaborative network

Machine automation and robotics expertise provided by your global partner



40 Countries

150 Locations

3,000 Application Engineers

## Give us a call. Send us your sample.

Our knowledgeable experts are prepared to support your application.



Simulations





Testing with real products



Real cycle time analysis

Let us help you with all aspects of your most demanding applications and provide a complete solution. Robotics, vision, motion and safety functions are simulated and tested in our global robotics and automation centers. We are ready to support you and all of your automation needs.

# Robot lineup

Industry segment			Application	Parallel robots	
Food and Beverage	Digital	Automotive			
				Hornet 565	Quattro 650/800
			Primary packing	◆	◆
			Secondary packing	◆	◆
			Aligning, packaging	◆	◆
			Palletizing		
			Screw fastening		
			General assembling		
			Deburring and polishing		
			Dispensing		
			Measuring, inspection, testing		◆
			Machine tending		
			Dispensing		
			Measuring, inspection, testing		
			Material handling		
			Mounting	Ceiling	
			Payload capacity	3kg (8kg <sup>*1</sup> )	6kg (15kg <sup>*2</sup> )
			Radius	565mm	650 - 800mm
			Reach	---	---
			Position repeatability	±0.10mm	±0.10mm

\*1. Without rotation axis  
 \*2. Quattro650 using P30



SCARA robots			Articulated robot
			
Cobra 350	eCobra 600/800	eCobra 800 Inverted	Viper 650/850
◆	◆	◆	
◆	◆	◆	◆
	◆	◆	◆
◆	◆	◆	◆
◆	◆	◆	◆
◆	◆	◆	◆
◆	◆	◆	◆
◆	◆	◆	◆
◆	◆	◆	◆
◆	◆	◆	◆
◆	◆	◆	◆
◆	◆	◆	◆
◆	◆	◆	◆
◆	◆	◆	◆
◆	◆	◆	◆
Table, Floor		Ceiling	Table, Floor, Ceiling
5kg	5.5kg	5.5kg	5kg
---	---	---	---
350mm	600 - 800mm	800mm	653 - 855mm
±0.015mm	±0.017mm	±0.017mm	±0.02 - 0.03mm

Product photographs and figures that are used in this catalog may vary somewhat from the actual products.



**OMRON AUTOMATION AMERICAS HEADQUARTERS** • Chicago, IL USA • 847.843.7900 • 800.556.6766 • [www.omron247.com](http://www.omron247.com)

**OMRON CANADA, INC. • HEAD OFFICE**

Toronto, ON, Canada • 416.286.6465 • 866.986.6766 • [www.omron247.com](http://www.omron247.com)

**OMRON ELECTRONICS DE MEXICO • HEAD OFFICE**

México DF • 52.55.59.01.43.00 • 01-800-226-6766 • [mela@omron.com](mailto:mela@omron.com)

**OMRON ELECTRONICS DE MEXICO • SALES OFFICE**

Apodaca, N.L. • 52.81.11.56.99.20 • 01-800-226-6766 • [mela@omron.com](mailto:mela@omron.com)

**OMRON ELETRÔNICA DO BRASIL LTDA • HEAD OFFICE**

São Paulo, SP, Brasil • 55.11.2101.6300 • [www.omron.com.br](http://www.omron.com.br)

**OMRON ARGENTINA • SALES OFFICE**

Cono Sur • 54.11.4783.5300

**OMRON CHILE • SALES OFFICE**

Santiago • 56.9.9917.3920

**OTHER OMRON LATIN AMERICA SALES**

54.11.4783.5300

**OMRON EUROPE B.V.** • Wegalaan 67-69, NL-2132 JD, Hoofddorp, The Netherlands. • +31 (0) 23 568 13 00 • [www.industrial.omron.eu](http://www.industrial.omron.eu)

*Authorized Distributor:*

**Controllers & I/O**

- Machine Automation Controllers (MAC) • Motion Controllers
- Programmable Logic Controllers (PLC) • Temperature Controllers • Remote I/O

**Robotics**

- Industrial Robots • Mobile Robots

**Operator Interfaces**

- Human Machine Interface (HMI)

**Motion & Drives**

- Machine Automation Controllers (MAC) • Motion Controllers • Servo Systems
- Frequency Inverters

**Vision, Measurement & Identification**

- Vision Sensors & Systems • Measurement Sensors • Auto Identification Systems

**Sensing**

- Photoelectric Sensors • Fiber-Optic Sensors • Proximity Sensors
- Rotary Encoders • Ultrasonic Sensors

**Safety**

- Safety Light Curtains • Safety Laser Scanners • Programmable Safety Systems
- Safety Mats and Edges • Safety Door Switches • Emergency Stop Devices
- Safety Switches & Operator Controls • Safety Monitoring/Force-guided Relays

**Control Components**

- Power Supplies • Timers • Counters • Programmable Relays
- Digital Panel Meters • Monitoring Products

**Switches & Relays**

- Limit Switches • Pushbutton Switches • Electromechanical Relays
- Solid State Relays

**Software**

- Programming & Configuration • Runtime